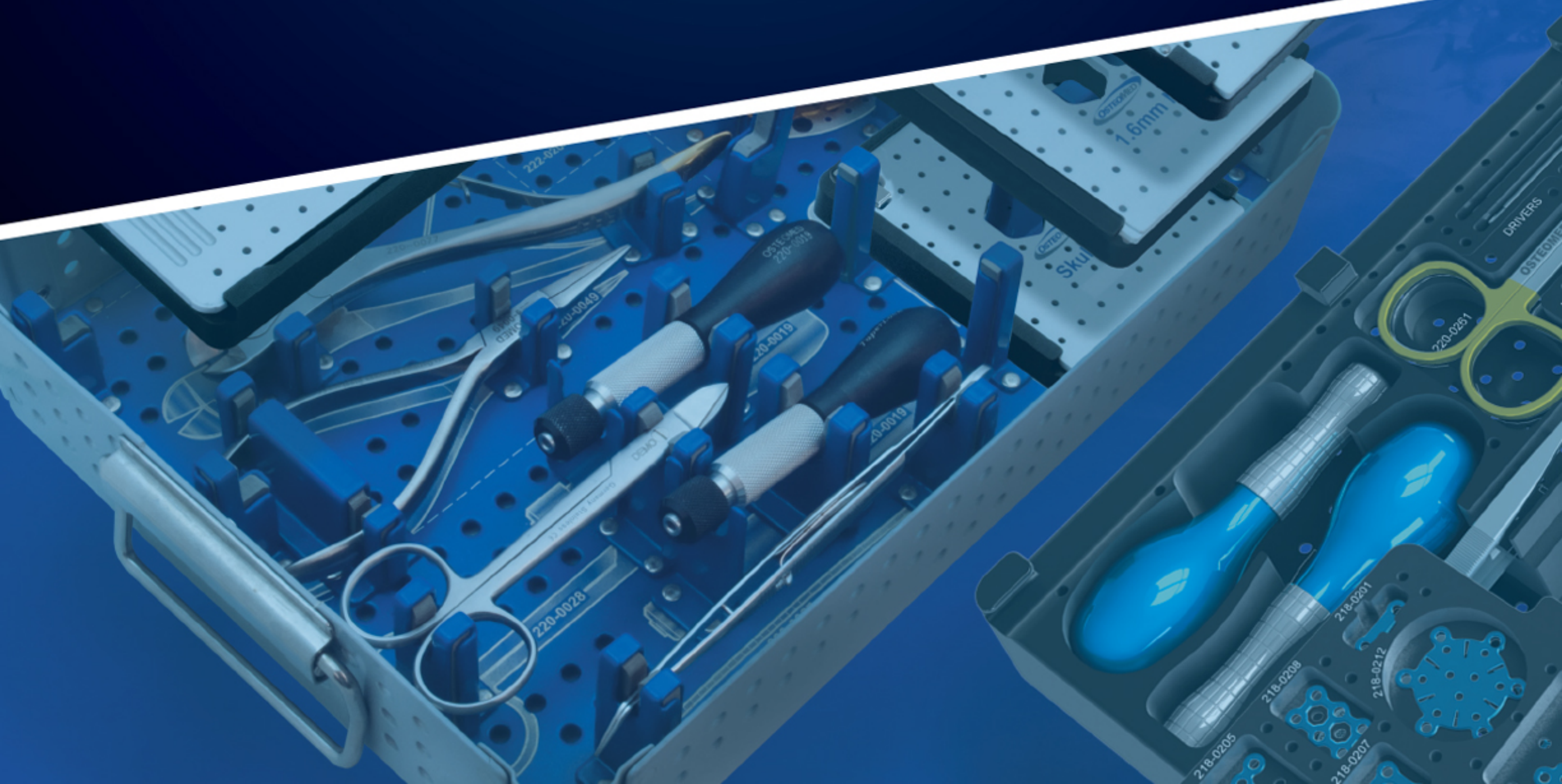




Rethinking Possibilities, Reshaping Lives

NEUROSURGICAL SOLUTIONS





WHO WE ARE

For more than two decades, OsteoMed® has remained sharply-focused on meeting the needs of surgeons and their patients by rethinking clinical possibilities with a focus on procedural efficiency, efficacy and uncompromising quality. A highly nimble and responsive company, OsteoMed® is a leading global innovator, developer, manufacturer and marketer of specialty medical devices, surgical implants and powered surgical instruments.

Our success is driven by the ability to quickly develop and deliver innovative, quality products focused on improving patient outcomes, and to offer technically advanced, simple and cost-effective solutions for surgeons, hospitals and patients. Our 60,000 square foot state-of-the-art manufacturing facility and world headquarters is located in Dallas, Texas. This allows us to offer remarkable responsiveness to those who count on our products.

MISSION STATEMENT

Improve patient outcomes through the design, manufacture and service of high quality, innovative and cost-effective surgical products.

CORE VALUES

- Integrity
- Accountability, Initiative & Empowerment
- Culture of Continuous Improvement
- Teamwork Based on Trust, Respect & Communication
- Uncompromising Quality, Innovation & Service
- Fiscal Responsibility
- Recognition of Employee Excellence

PATIENT CARE | PURPOSE | PEOPLE | PRODUCT

At OsteoMed, we work alongside surgeons who devote their lives to improving those of others.

Our goal: rethinking the possibilities that have the power to reshape lives.

With a spirit of innovation and a relentless focus on quality, we offer surgeons a wide range of choices for neurosurgical procedures.

Simply stated, we are SURGEON DRIVEN and PATIENT FOCUSED.



**OSTEOMED'S NEUROSURGICAL
PRODUCT OFFERINGS**

OUR HISTORY

OsteoMed was born in a 900 square foot office in Glendale, California in 1991 and moved our corporate headquarters to the Dallas - Fort Worth area in 1993. OsteoMed becomes a part of Colson Associates in 2002, other Colson medical device companies include Acumed LLC, ApexTools & Orthopedics Company, MicroAire Surgical Instruments LLC, Precision Edge Surgical Products LLC and Skeletal Kinetics.

Today, OsteoMed is a leading global innovator, developer, manufacturer and marketer of specialty medical devices, surgical implants and powered surgical instruments.

We employ over 200 people and have over 150 distributors in more than 40 countries.

PRODUCT HIGHLIGHTS



PROFILE 0

LOW PROFILE NEURO PLATING SYSTEM

At .25mm plate profile, the system virtually eliminates patient palpability.



PINNACLE

OsteoMed's torque-limiting software sets Pinnacle apart from the competition.



smartflex

CRANIAL SPRING DISTRACTION SYSTEM

Pre-formed based on an extensive analysis of infant cranial anatomy.



PROFILE PLUS

STANDARD PROFILE NEURO PLATING SYSTEM

An optional auxiliary compartment may be added to the Profile Plus tray.

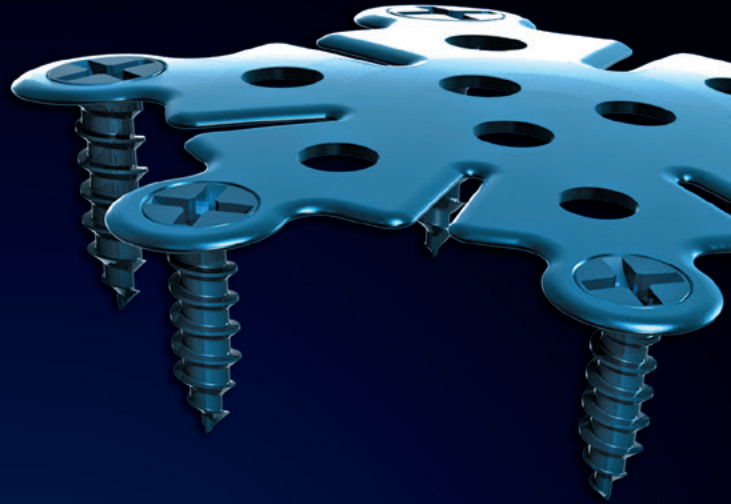


Rethinking Possibilities, Reshaping Lives

3885 Arapaho Rd.
Addison, TX 75001
Customer Service: 800.456.7779
Outside the U.S.: 001.972.677.4600
Fax: 800.390.2620
Fax Outside the U.S.: 001.972.677.4709
E-mail: customer.service@osteomed.com
www.osteomed.com

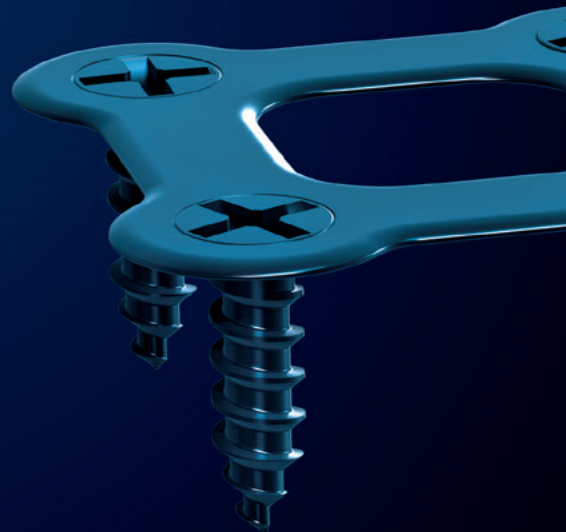
P/N 030-2124 Rev.A

PROFILE 0



PROFILE 0

LOW PROFILE NEURO PLATING SYSTEM



Profile Zero is an innovative addition to the OsteoMed Neurosurgical plating product offering. At .25mm plate profile, the system virtually eliminates patient palpability

The uniquely engineered plate and screw construct offers strength for cranial fixation with the lowest profile on the market. With a variety of plate designs, Profile Zero provides the neurosurgeon with many options in the OR. Additionally, the updated tray design reduces the system's "footprint" in the surgical theater. Coupled with the plates and screws is a new ergonomic screwdriver handle which is functional and aesthetically appealing

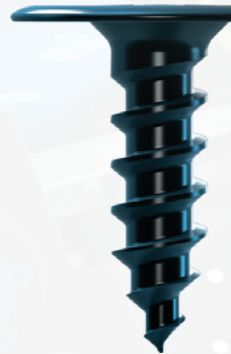
Lowest Profile Neurosurgical Plating System

Profile Zero is an innovative addition to the OsteoMed Neurosurgical plating product offering. At .25mm plate profile, the system virtually eliminates patient palpability.

Improved Screw Engagement

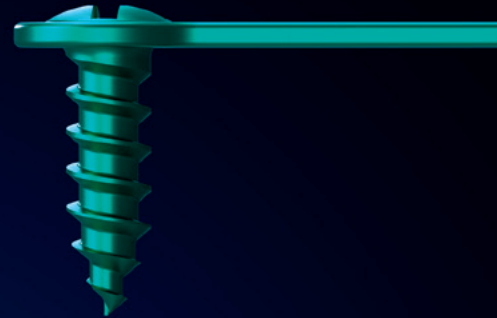
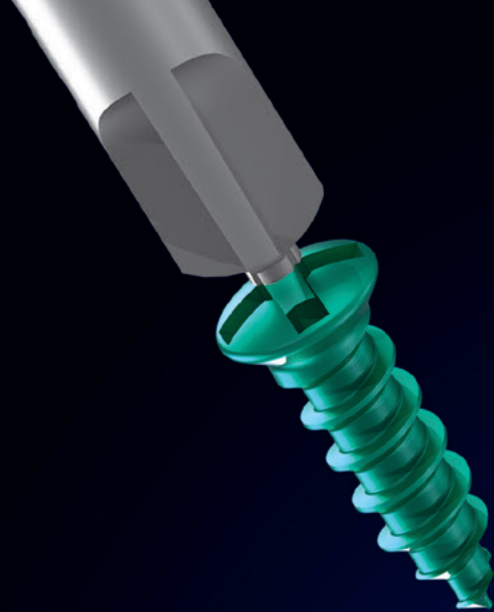
Profile Zero is an innovative addition to the OsteoMed Neurosurgical plating product offering. At .25mm plate profile, the system virtually eliminates patient palpability.

- .25mm plate-to-screw profile
- Beveled plate edges for reduced palpability
- Plates easily contourable to patient anatomy
- Customizable VisiDisk
- Reduced OR footprint



For more information about *Profile 0*, visit our website at www.osteomed.com to view the *Profile 0* brochure and catalog. For additional assistance please contact Sales Support at SalesSupportRep@osteomed.com

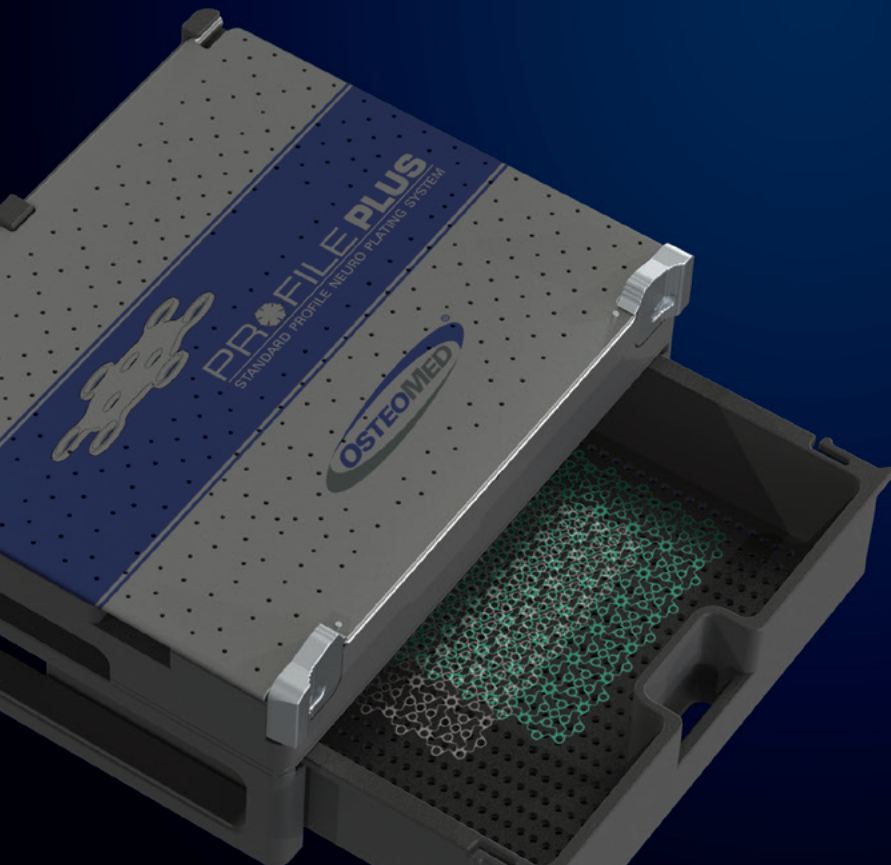
PROFILE PLUS



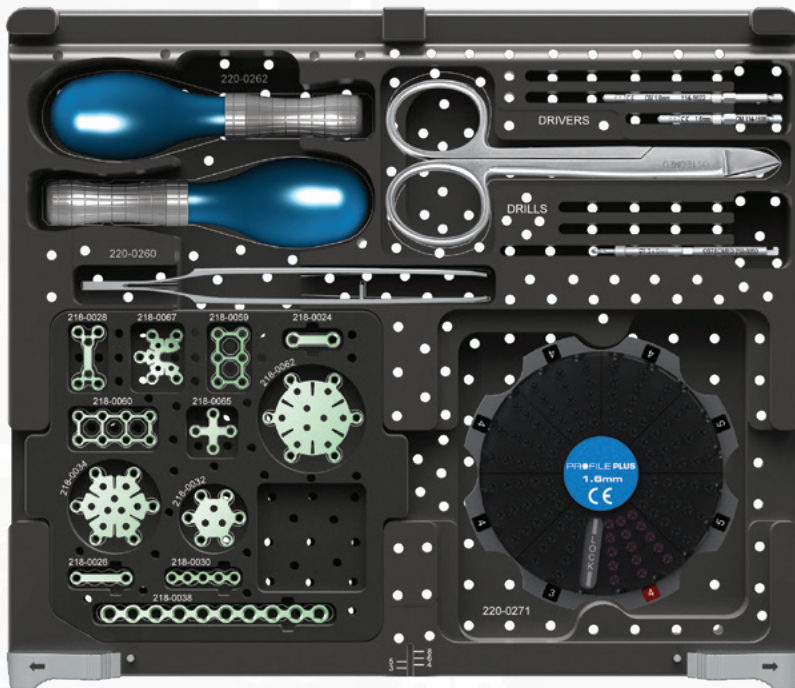
PROFILE PLUS

STANDARD PROFILE NEURO PLATING SYSTEM

The Profile Plus Neuro Fixation System features OsteoMed's patented self-drilling screws with enhanced screw retention technology.



The Profile Plus Neuro Fixation System features OsteMed's patented self-drilling screws with enhanced screw retention technology. The improved screw design ensures a secure fit and is effective in dense bone without pre-drilling. Profile Plus contains a variety of titanium plate designs for cranial procedures with outstanding aesthetic results. An optional auxiliary compartment may be added to the Profile Plus tray for the inclusion of larger meshes and instrumentation.



Features & Benefits

- Center-post screw technology
- Efficient self-drilling screws
- Easy-to-use instrumentation
- Customizable VisiDisk
- Reduced OR footprint

Redesigned driver stem & screw head interface for enhanced screw retention



For more information about *Profile Plus*, visit our website at www.osteomed.com to view the *Profile Plus* brochure and catalog. For additional assistance please contact Sales Support at SalesSupportRep@osteomed.com

The advertisement features a dark blue background. In the top left corner, a light blue banner contains the text 'DURAKNIFE'. On the left side, a large, blue-handled dural knife is shown vertically, with its curved metal blade pointing downwards. On the right side, a smaller, similar dural knife is shown horizontally, with its blade pointing to the left. The central focus is the large, white, stylized text 'DURAKNIFE'.

DURAKNIFE

DURAKNIFE

The OSTEOMED Dural Knife is indicated for opening the dura in certain cranial and spinal procedures. The OSTEOMED Dural Knife is intended for single patient use only. OsteoMed single use devices cannot be reused and/or reprocessed. The product has been labeled as single use only for patient safety.

The design of the device and the intricacies of the surfaces may not facilitate cleaning and sterilization after contact with body tissues or fluids, so there is an increased risk of contamination if reused. This may lead to potential risks of cross infection/contamination associated with using inadequately cleaned and sterilized devices. The cutting efficacy may be reduced requiring the surgeon to use increased force that might cause patient harm and/or increase the risk of thermal necrosis. Because this product has not been validated for multiple uses, OsteoMed cannot guarantee the safety and effectiveness of the device if it is used on more than one patient.

Triangle Design

- Ergonomic grip
- Slip resistant

Grip

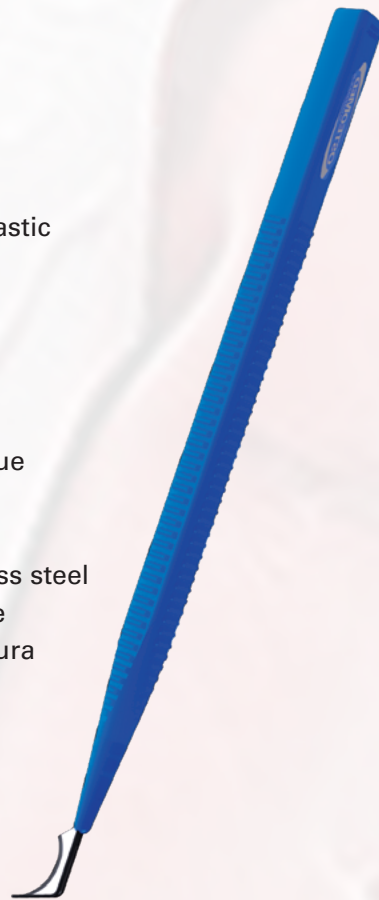
- Medical grade ABS plastic
- Lightweight material
- Textured handle

Foot Plate

- Lifts the dura
- Protects the brain tissue

Blade

- Surgical grade stainless steel
- Curved cutting surface
- Lifts and incises the dura



For more information about *DuraKnife* visit our website at www.osteomed.com to view the *DuraKnife* brochure and catalog. For additional assistance please contact Sales Support at SalesSupportRep@osteomed.com

FAST FLAP



FAST FLAP

NEUROSURGICAL FIXATION SYSTEM

Fast-Flap is a comprehensive plating system designed to address multiple neurosurgical approaches in one compact unit.

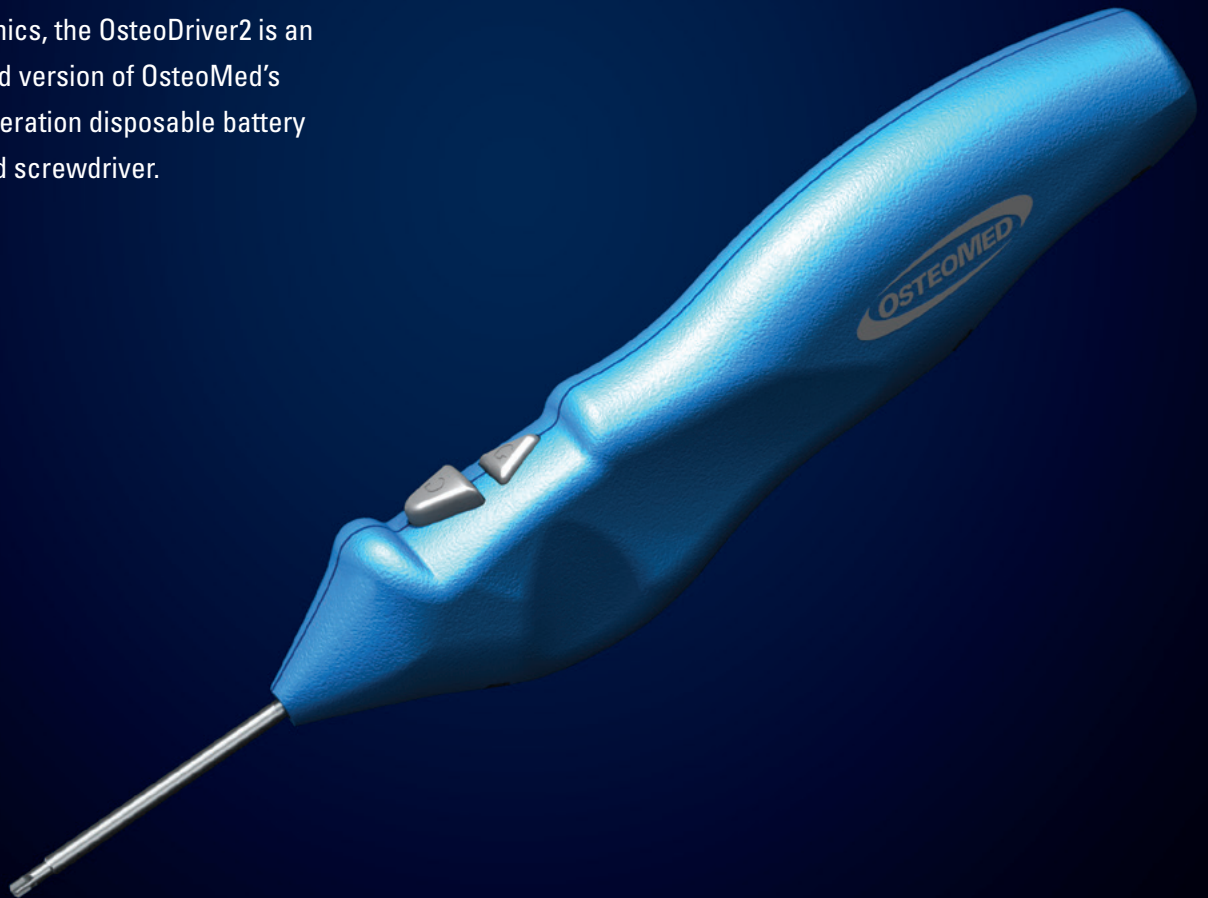


OsteoDriver 2

OsteoDriverTM 2

Disposable Battery Powered Screwdriver

With increased torque and enhanced ergonomics, the OsteoDriver2 is an improved version of OsteoMed's first generation disposable battery powered screwdriver.



OsteoDriver 2

With increased torque and enhanced ergonomics, the OsteoDriver2 is an improved version of OsteoMed's first generation disposable battery powered screwdriver. This updated driver accepts interchangeable accessories with the same hex shank design utilized in the Profile Zero set. Packaged in a sterile barrier, the OsteoDriver2 is a ready-to-use driver for all neurological procedures.

Single-Use Battery-Operated Disposable Drive

- No more autoclaving and repair headaches

Increased Torque

- More powerful than its predecessor to fully seat all screws

Interchangeable Accessories

- No tool required

Sterile-Packaged

- Conveniently arrives ready to use in the OR

Profile Zero Driver Stem Compatibility

- Compatible with OsteoMed's most up-to-date hex shank design for Craniomaxillofacial procedures

Enhanced Ergonomics

- Comfortable control with various grip configurations



For more information about *OsteoDriver 2* visit our website at www.osteomed.com to view the *OsteoDriver 2* brochure and catalog. For additional assistance please contact Sales Support at SalesSupportRep@osteomed.com

OSTEOFLAP™

OSTEOFLAP™

CRANIAL CLAMP SYSTEM

OsteoMed's OsteoFlap was the first instrument-free cranial clamp system.

Threaded stems allow infinite adjustability to accommodate fixation of various bone thicknesses. Instrument-free, sterile packaged, and ready-to-use makes OsteoFlap the most convenient and easy to use cranial clamp system on the market.



The OsteoFlap system is comprised of a clamping device which has a threaded post attached to an inferior disk and a superior disk that threads down the post to secure a sandwich fit of the cranial flap and cranium between the inferior disk and the superior disk. Desired fixation is achieved by threading the superior disk down the threaded post and against the cranial bone by the surgeon using the tightening tool. These clamps are available in a range of sizes, 11mm, 17mm, and 22mm.

- Flex-flanges for stability and adaptability
- Threaded stem allows for infinite adjustability
- Sterile component packaging
- No instrumentation required



For more information about *OsteoFlap* visit our website at www.osteomed.com to view the *OsteoFlap* brochure and catalog. For additional assistance please contact Sales Support at SalesSupportRep@osteomed.com

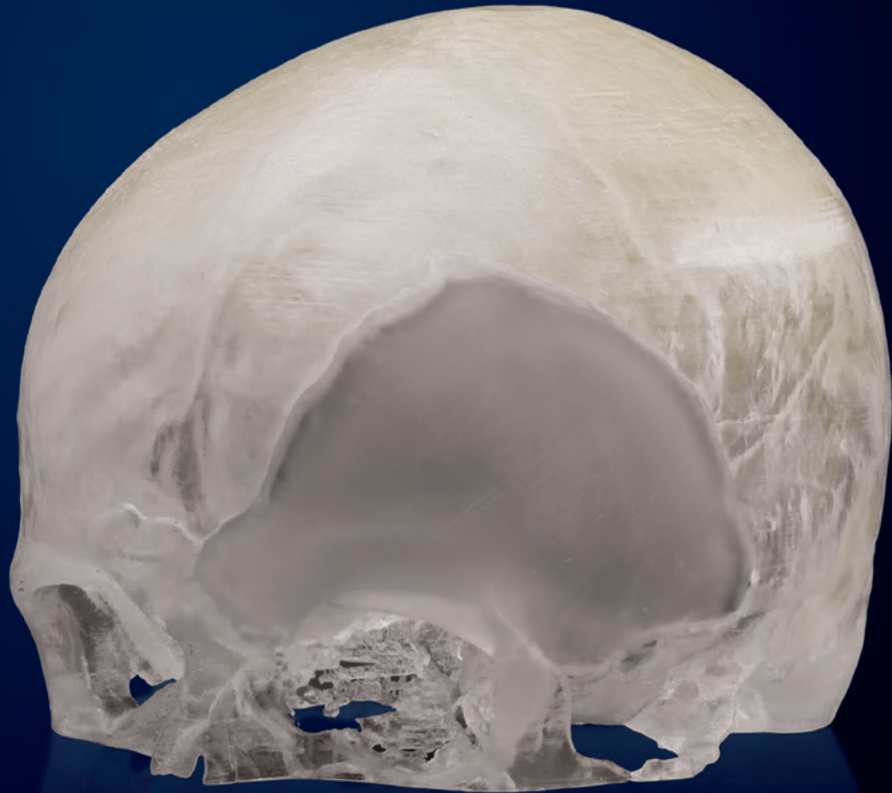


OsteoMatch

OsteoMatch™

PATIENT MATCHED IMPLANTS

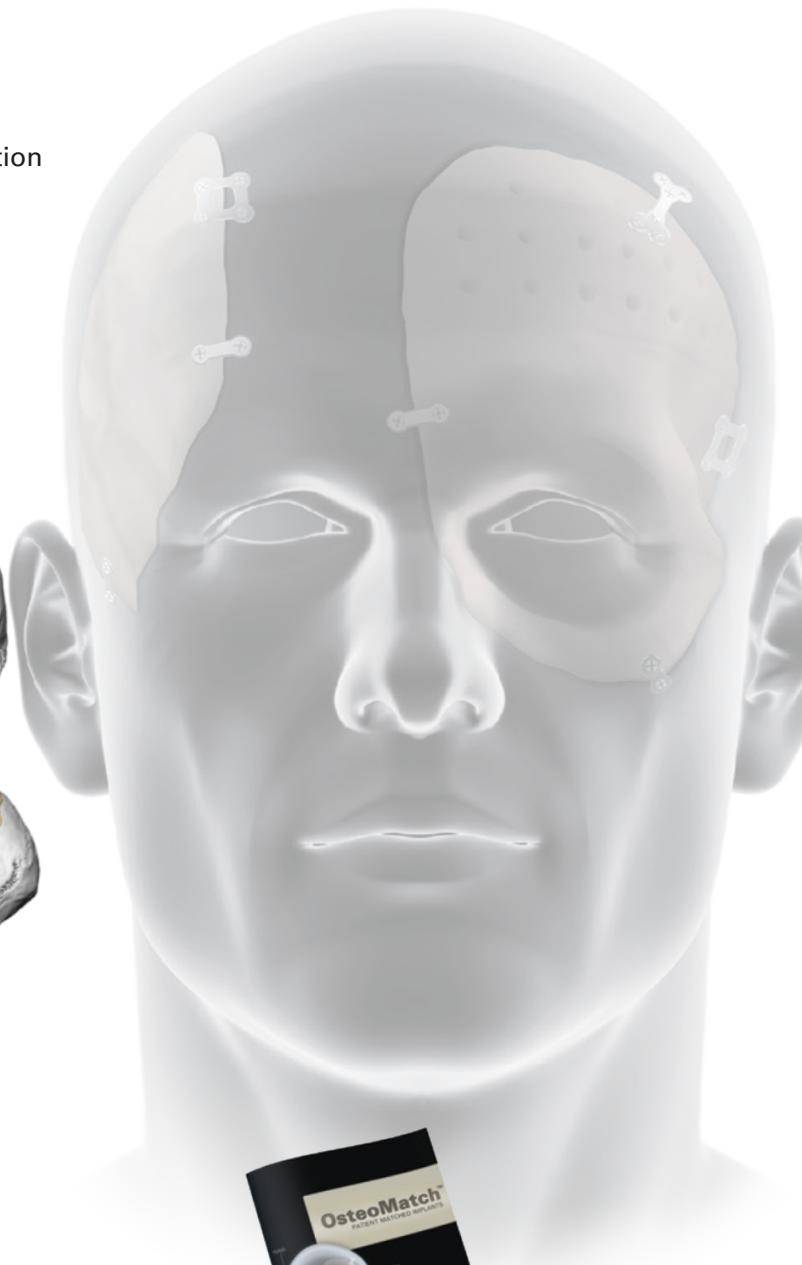
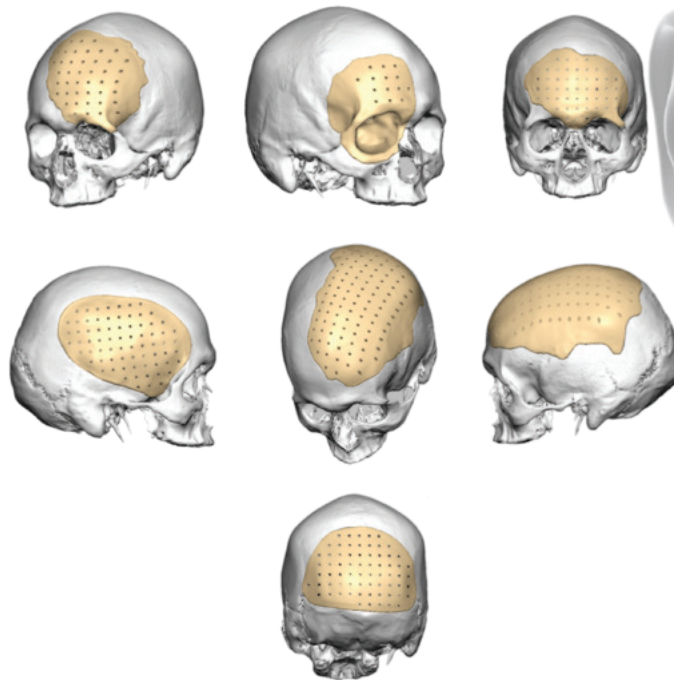
OsteoMed's new PEEK
(Polyether Ether Ketone)
Patient Matched Implant provides
an improved solution for patients
with a cranial defect.



Technology and craftsmanship produce a perfect fit to the specific anatomical requirement in a custom implant. highly temperature resistant, the PEEK PMI may be vacuum sterilized. Depending on the defect size, OsteoMatch PEEK can be provided in single or multiple pieces. Additionally, the implant can be reliably fixated using OsteoMed's cranial fixations systems.

OsteoMatch PEEK

- Optimal anatomical fit versus conventional fixation
- Reduce operating time
- Excellent aesthetic results
- Autoclavable
- Fracture resistant

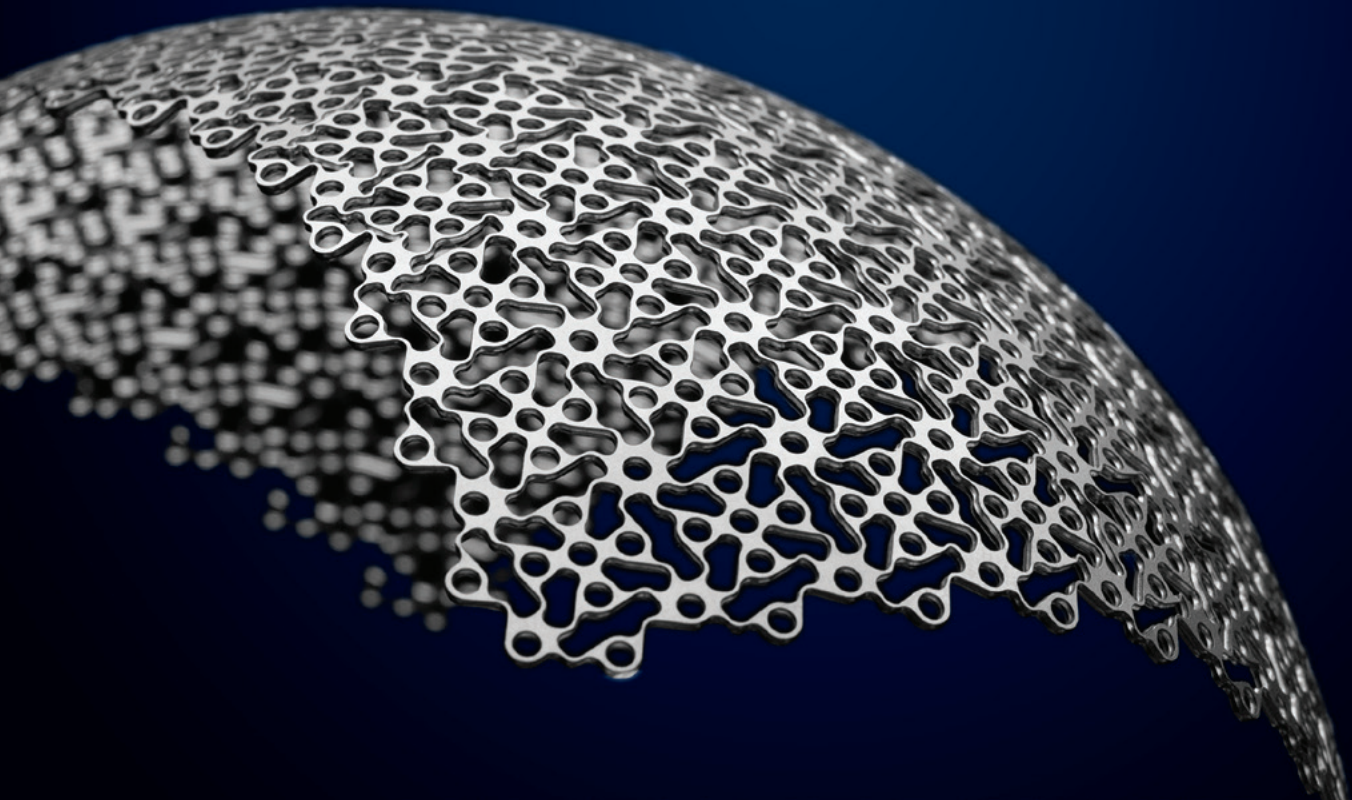


For more information about *OsteoMatch* visit our website at www.osteomed.com to view the *OsteoMatch* brochure and catalog. For additional assistance please contact Sales Support at SalesSupportRep@osteomed.com

OsteoForm Mesh

FORMABLE CRANIOFACIAL MESH

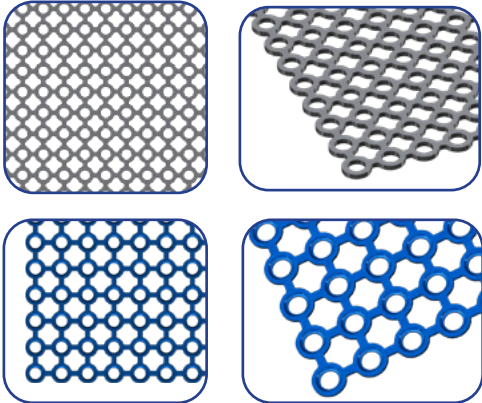
OsteoMed's OsteoForm Mesh offers strength and passive contourability through innovative engineering. OsteoForm Mesh is available in pre-formed mesh and rigid constructs.



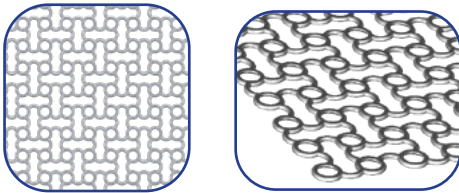
OsteoForm Mesh

OsteoMed offers a comprehensive portfolio of mesh products for CMF and neurosurgical applications. Regardless of specialty, surgeons will find all the appropriate dimensions, profiles, and patterns of mesh necessary to ensure positive patient outcomes.

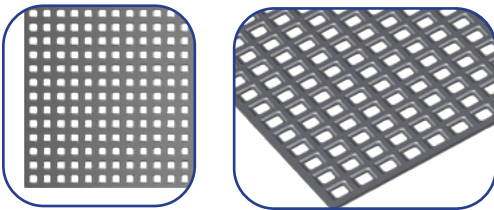
Circle Grid



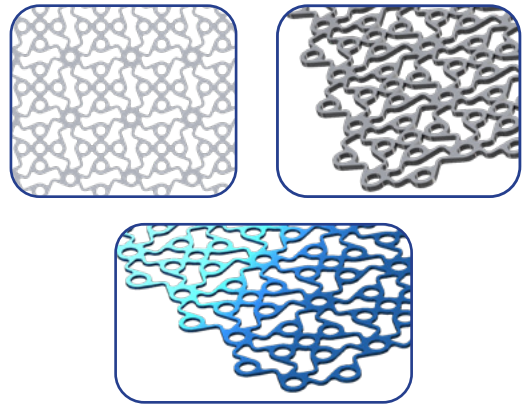
Dynamic



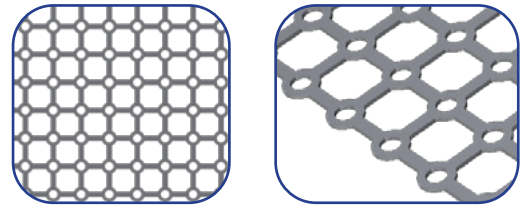
Square Grid



OsteoForm



Micro Mesh



For more information about *OsteoForm Mesh* visit our website at www.osteomed.com to view the *OsteoForm Mesh* brochure and catalog. For additional assistance please contact Sales Support at SalesSupportRep@osteomed.com



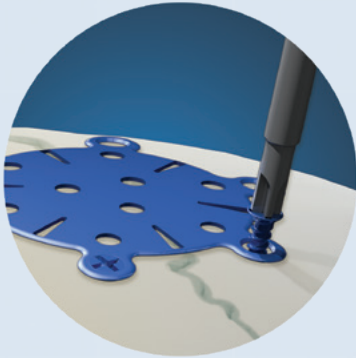
PINNACLE



The Pinnacle Battery Powered Smart Driver features an ergonomic streamlined pencil grip and an optimized center of gravity for supreme control and comfort.

THE
P  **NNACLE**
OF PRECISION

OsteoMed's torque-limiting software sets Pinnacle apart from the competition. Programmed based on an exhaustive screw characterization, the software senses when any OsteoMed screw is fully seated and stops to prevent stripping of the bone. With a top speed of 2,000 RPM, Pinnacle seats neuro screws in less than a second. This smart power driver is 510(k) cleared.



Speed & Precision

With a top speed of 2,000 RPM, Pinnacle seats neuro screws in less than a second and is also powerful enough to drill pilot holes into dense bone.



Mode Selection

Hold down back mode button for 2 seconds to switch between drive and drill modes.



Disposable Batteries

Batteries come in single or double sterile packed boxes.

Pinnacle Accessories

Pinnacle accepts OsteoMed hex shank attachments including driver stems and twist drills.



For more information about *Pinnacle* visit our website at www.osteomed.com to view the *Pinnacle* brochure and catalog. For additional assistance please contact Sales Support at SalesSupportRep@osteomed.com

